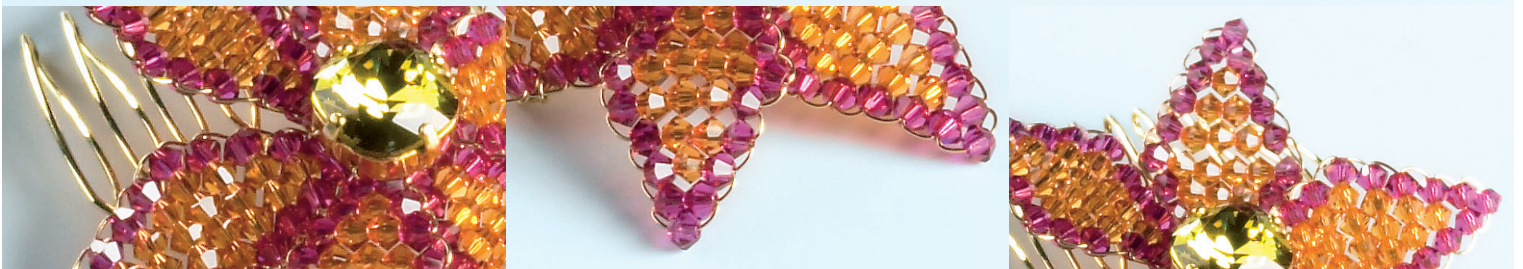


FLOWER POWER HAIRCOMB



FLOWER POWER HAIRCOMB



CRYSTALLIZED™ – Swarovski Elements

Article	Product Group	Article No.	Amount	Size	Color	Color Code	Supplies
	Beads	5301	120	4 mm	Fuchsia (F)	502	6 18" pieces of 28 gauge gold tone wire
	Beads	5301	96	4 mm	Hyacinth (H)	236	2 8" pieces 28 gauge gold tone wire
	Fancy Stone	4470	1	12 mm	Erinite	360	1 12" piece 28 gauge gold tone wire
							1 Gold tone hair comb
							Gold tone 2 hole setting
							Tools
							Wire Cutter
							Flat Nose Pliers

STEP 1

- Thread 1 Fuchsia bead to the middle of an 18" piece of wire.
- Add 2 Fuchsia beads to one side of wire, lace other side of wire thru 2 beads and pull snug.
- Add 1-Fuchsia, 1-Hyacinth, 1-Fuchsia and lace other side of wire thru FHF and pull snug.

STEP 2+3

- Continue adding beads in the following pattern
 - a. F, 2H, F
 - b. F, 3H, F
 - c. F, 4H, F
 - d. F, 3H, F
 - e. F, 2H, F
 - f. F, H, F
 - g. 2F
 - h. F
- When the first petal is complete, secure the beads by twisting the wire. Make 6 petals.

STEP 4

- Place the Erinite crystal into the frame and secure in place by gently pressing on the prongs with a Flat Nose pliers.
- Thread 8" wire through holes in stone setting.
- With a Flat Nose Pliers, twist the stems of the 6 petals to form a flower.

STEP 5

- Place the Erinite set stone in the center of the flower and twist wire around the twisted petal stems.

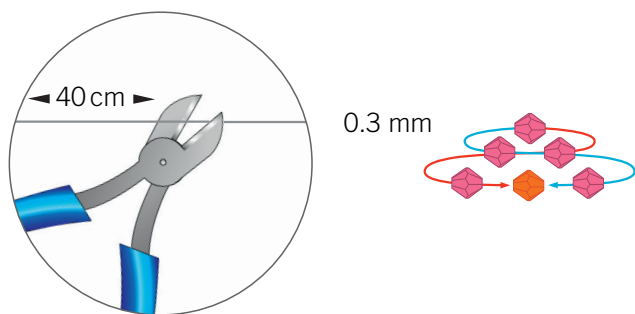
STEP 6

- Make sure the wire is twisted tightly under the flower and cut excess wire.

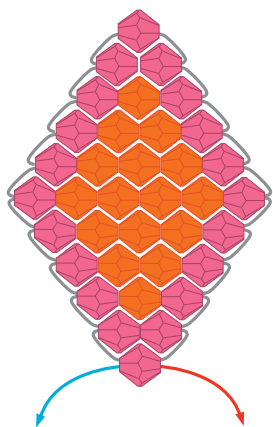
STEP 7

- Weave 12" wire under Erinite stone and pass thru to back of flower. Secure flower on hair comb.

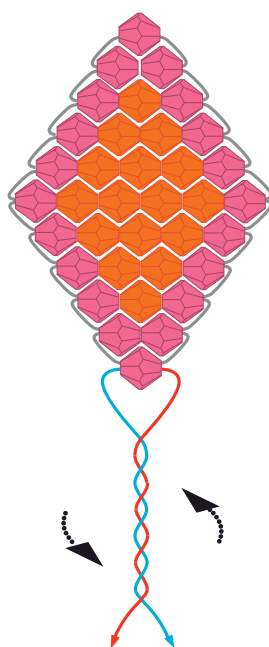
STEP 1



STEP 2

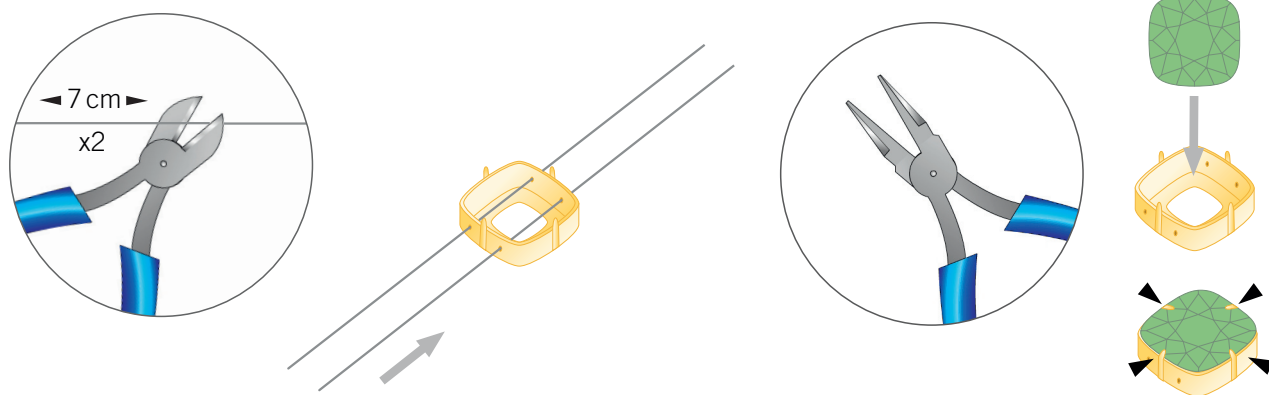


STEP 3

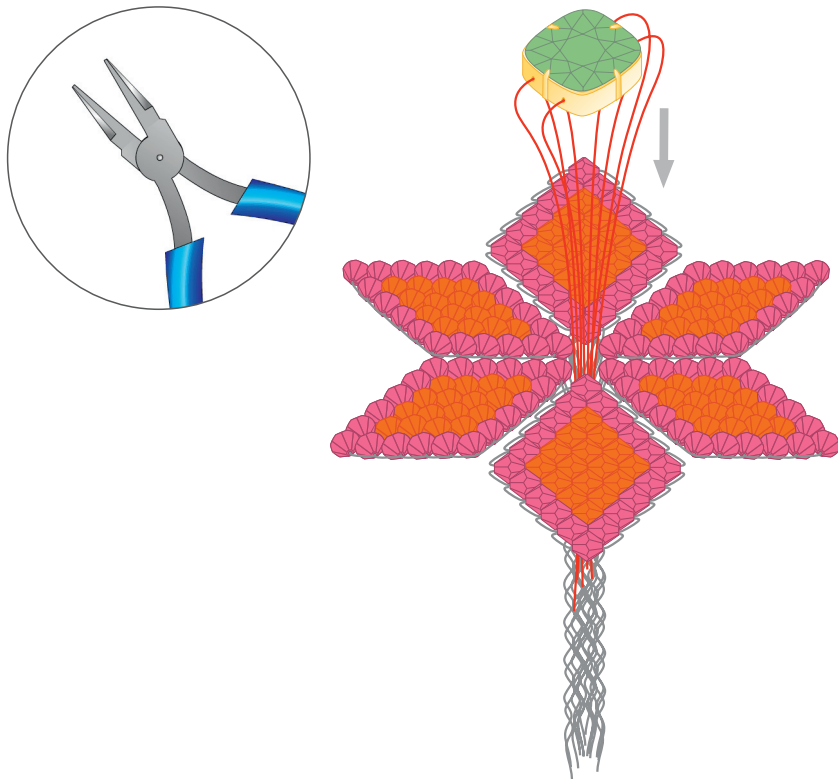


REPEAT STEP 1 – 3 6 X

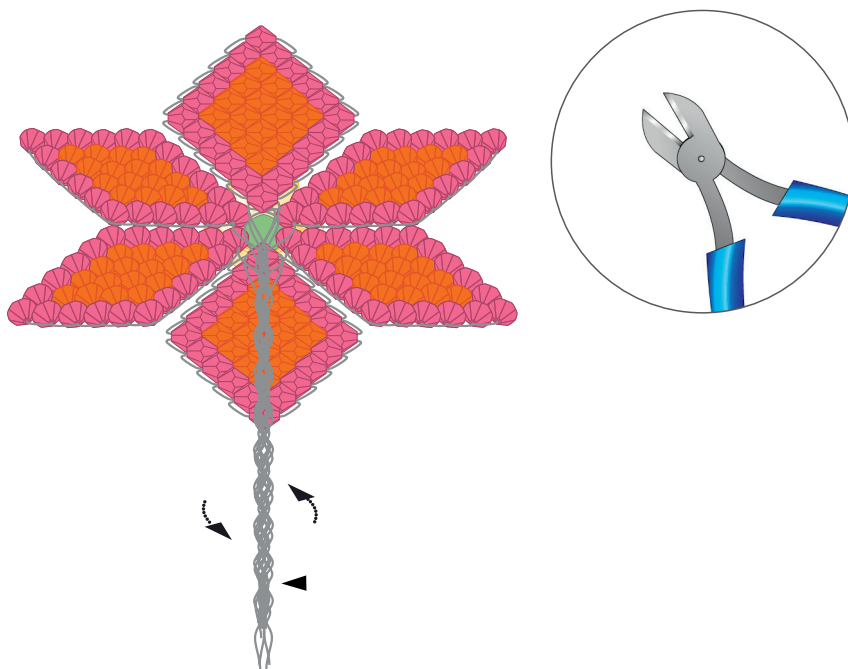
STEP 4



STEP 5



STEP 6



STEP 7

