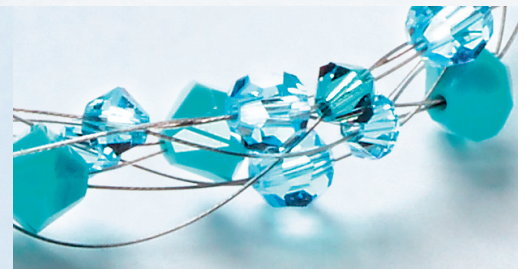
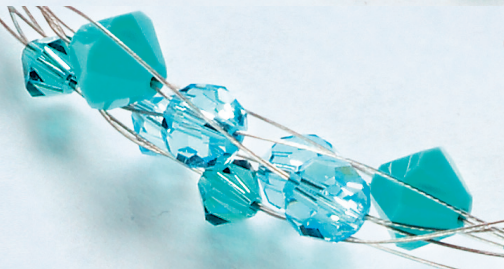


CREATE
your STYLE™
with CRYSTALLIZED™ – Swarovski Elements

STRINGED NECKLACE AND BRACELET



STRINGED NECKLACE STRINGED BRACELET



CRYSTALLIZED™ – Swarovski Elements

Article	Product Group	Article No.	Amount *	Size	Color	Color Code	Supplies
	Beads	5000	30/15**	5 mm	Aquamarine	202	1 Nylon Coated Wire, 0.012 diameter 4 Large Sterling Crimp Beads, 2 for necklace, 2 for bracelet 2 Toggles or clasps of your choice Tools: Crimping Tools Angle Edge Cutters
	Beads	5301	32/18**	4 mm	Aquamarine	202	
	Beads	5301	32/18**	4 mm	Indicolite	379	
	Beads	5301	16/9**	6 mm	Turquoise	267	

* Approximate quantity depending on your desired length
 ** Quantities for Bracelet

Begin the necklace by cutting 8 strands of 24" lengths of wire (or longer if creating a longer piece: see tip number three). Feed crimp bead onto all eight strands, feed the strands through toggle or clasp, then back through crimp bead. Using crimping tool, crimp bead tightly to secure all eight strands, and cut excess wire with angle edge cutters. Begin stringing crystals using the pattern below:

STEP 1
 Strands 1 & 2: 4 mm bicone aquamarine
 Strands 4 & 5: 5 mm round aquamarine
 Strands 7 & 8: 6 mm bicone turquoise

STEP 2
 Strands 2 & 3: 4 mm bicone indicolite
 Strands 6 & 7: 5 mm round aquamarine

STEP 3
 Strands 1 & 4: 5 mm round aquamarine
 Strands 5 & 8: 6 mm bicone turquoise

STEP 4
 Strands 2 & 7: Indicolite

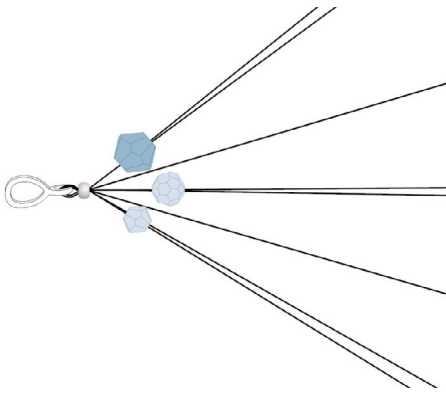
STEP 5
 Strands 1 & 3: 5 mm round aquamarine
 Strands 6 & 8: 4 mm bicone aquamarine

Continue to repeat steps 2 through 5 until you have accomplished desired length. Add additional crimp bead, and other end of toggle or clasp, and finish off as mentioned above.

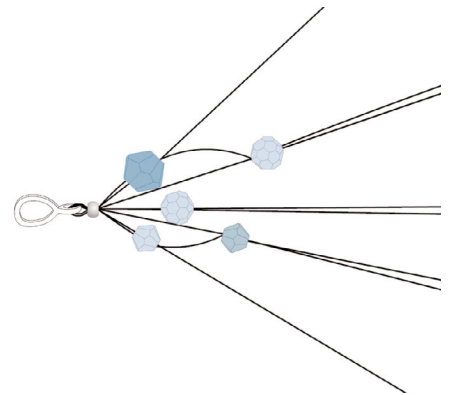
The bracelet will be created using the same instructions for the necklace, but begin by cutting eight 12" strands.

- Tips:**
- While working in the crystals, count strands of wire 1–8, working from the left to right.
 - You may want to tape piece down to a table or solid surface to help stabilize while working in the crystals.
 - Keep in mind that the toggle and crimps will add 1 1/2" to 2" of length to the finished piece, when cutting initial wire lengths.

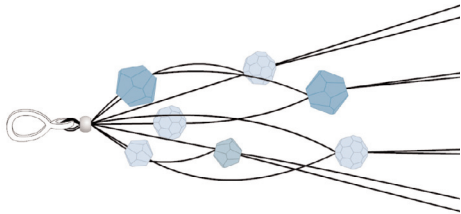
STEP 1



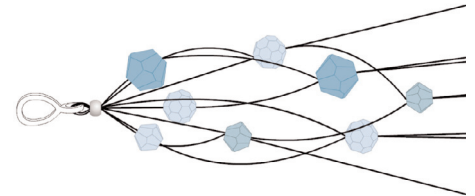
STEP 2



STEP 3



STEP 4



STEP 5

